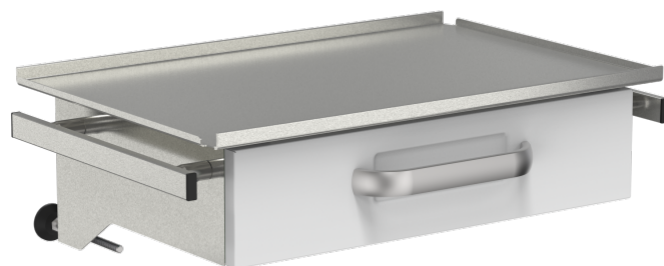


Shelf for round tube with drawer and lateral rails

Z2N09192

PRODUCT DESCRIPTION

Tray material	Stainless steel
Material drawer	steel, coated
Drawer height	120 mm
Max. load capacity	40 kg
Shelf size	540 mm x 360 mm
Drawer size	420 mm x 310 mm
For round tube	Ø 38 mm
Total load capacity (kg)	40



DIN EN 60601



Best hygienic properties
smooth surface, small gaps and joints



Z2N09192

Shelf for round tube



Area of application

optimal hygienic characteristics (wipe disinfection)

can be retro-fitted

easy mountable



Technology

made from high-quality stainless steel



Safety

Keine Verletzungsgefahr, da Plattenränder aufgekantet