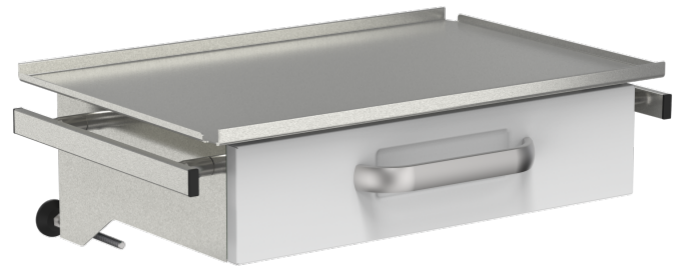


# Shelf for medical rail with drawer and lateral rails

Z2N09182

## PRODUCT DESCRIPTION

Tray material	Stainless steel
Material drawer	steel, coated
Drawer height	120 mm
for medical rail	25 x 10 mm
Max. load capacity	40 kg
Shelf size	540 mm x 360 mm
Drawer size	420 mm x 310 mm
Total load capacity (kg)	40



DIN EN 60601



Best hygienic properties  
smooth surface, small gaps and joints



Z2N09182

## Shelf for medical rail



### Area of application

optimal hygienic characteristics (wipe disinfection)

can be retro-fitted

easy mountable



### Technology

made from high-quality stainless steel



### Safety

Keine Verletzungsgefahr, da Plattenränder aufgekantet

