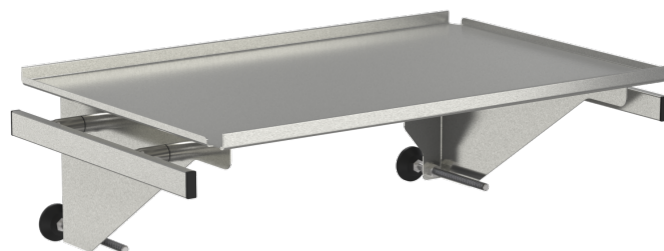


# Shelf for medical rail for round tube without drawer, with lateral rails

**Z2N09162**

## PRODUCT DESCRIPTION

Material	stainless steel / steel coated
Max. load capacity	40 kg
Shelf size	540 mm × 360 mm
For round tube	Ø 38 mm
Total load capacity (kg)	40



Best hygienic properties  
smooth surface, small gaps and joints



## Shelf for medical rail for round tube



### Area of application

optimal hygienic characteristics (wipe disinfection)

can be retro-fitted

easy mountable



### Technology

attractive appearance through an innovative base design

made from high-quality stainless steel



### Safety

No risk of injury as the panel edges are bevelled

