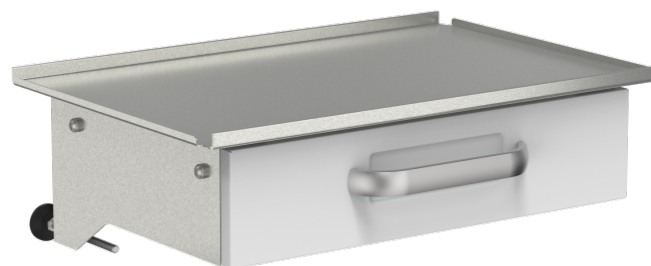


# Shelf for round tube with drawer

**Z2N09152**

## PRODUCT DESCRIPTION

|                          |                 |
|--------------------------|-----------------|
| Tray material            | Stainless steel |
| Material drawer          | steel, coated   |
| Drawer height            | 120 mm          |
| Max. load capacity       | 40 kg           |
| Shelf size               | 540 mm × 360 mm |
| Drawer size              | 420 mm × 310 mm |
| For round tube           | Ø 38 mm         |
| Total load capacity (kg) | 40              |



DIN EN 60601



Best hygienic properties  
smooth surface, small gaps and joints



Z2N09152

## Shelf for round tube



### Area of application

optimal hygienic characteristics (wipe disinfection)

can be retro-fitted

easy mountable



### Technology

made from high-quality stainless steel



### Safety

Keine Verletzungsgefahr, da Plattenränder aufgekantet

