

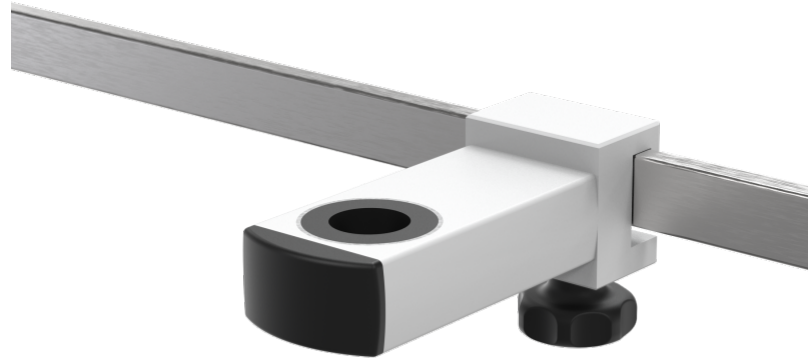
Extension Clamp

for round tube holder Ø 25 mm

Z2N09132

PRODUCT DESCRIPTION

Material	Aluminium
Color	White, RAL 9016
For attachment to	Medical rail
Inclusion for	Round tube Ø 25 mm
Distance between medical rail and round tube	100 mm
Total load capacity (kg)	30



PACKAGING UNIT: UNIT



DIN EN 60601



Easy to install
easy handling and fast installation time



Z2N09132

Extension Clamp

