

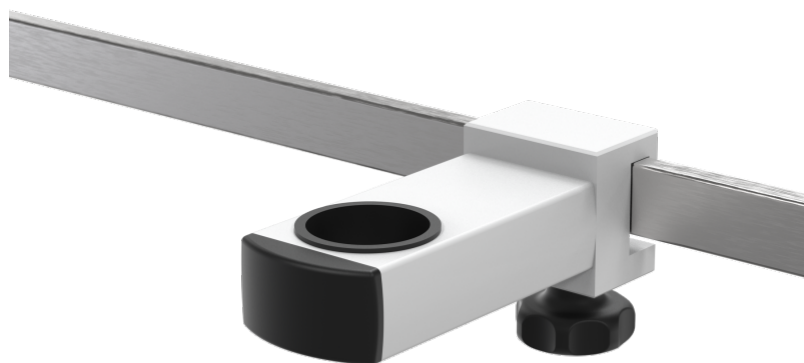
Extension Clamp

for round tube holder Ø 33,7 mm

Z2N09122

PRODUCT DESCRIPTION

Material	Aluminium
Color	White, RAL 9016
For attachment to	Medical rail, 25 x 10 mm
Inclusion for	Round tube Ø 33.7
Distance between medical rail and round tube	100 mm
Total load capacity (kg)	30



Z2N09122

Extension Clamp

