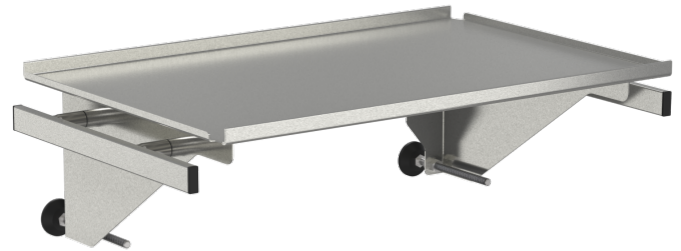


Shelf for medical rail without drawers, with lateral rails

Z2N09032

PRODUCT DESCRIPTION

Material	stainless steel / steel coated
Tray material	Stainless steel
for medical rail	25 x 10 mm
Max. load capacity	40 kg
Shelf size	540 mm x 360 mm
Total load capacity (kg)	40



DIN EN 60601



Best hygienic properties
smooth surface, small gaps and joints



Z2N09032

Shelf for medical rail



Area of application

optimal hygienic characteristics (wipe disinfection)

can be retro-fitted

easy mountable



Technology

made from high-quality stainless steel



Safety

Keine Verletzungsgefahr, da Plattenränder aufgekantet

