

# Shelf

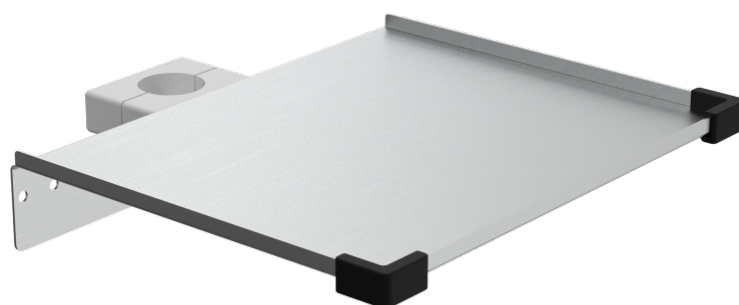
## with edge protection

Z2N0754A

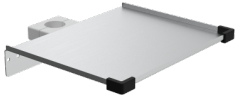
### PRODUCT DESCRIPTION

Material	Stainless steel/ Aluminium
Max. load capacity	4 kg
Size	300 mm x 250 mm
For round tube	Ø 38 mm
Total load capacity (kg)	4

PACKAGING UNIT: UNIT



Z2N0754A  
Shelf



**Area of  
application**

optimal hygienic  
characteristics (wipe  
disinfection)



**Technology**

made from high-quality  
stainless steel

