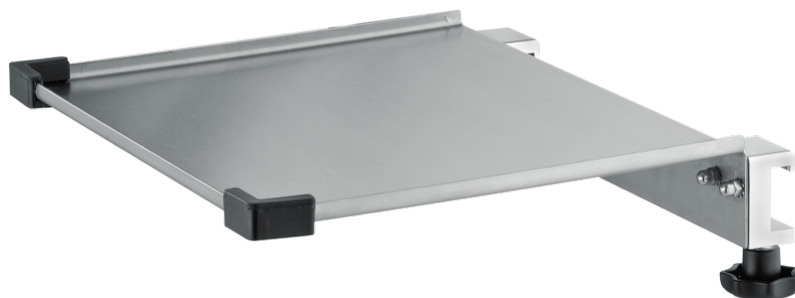


Shelf s.s., 300x250mm,for medical rail with 2 rail clamps, with edge-protection

Z2N07332

PRODUCT DESCRIPTION

Material	Stainless steel/ Aluminium
Max. load capacity	4 kg
Shelf size	300 mm x 250 mm
Total load capacity (kg)	4



PACKAGING UNIT: UNIT



Accessory ICS3
compatible with ceiling system ICS3

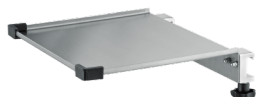


Accessory ICS4
compatible with ceiling rail system ICS4



Z2N07332

Shelf s.s., 300x250mm,for medical rail



Area of application

optimal hygienic characteristics (wipe disinfection)

can be retro-fitted

easy mountable



Technology

made from high-quality stainless steel



Safety

Keine Verletzungsgefahr, da Plattenränder aufgekantet