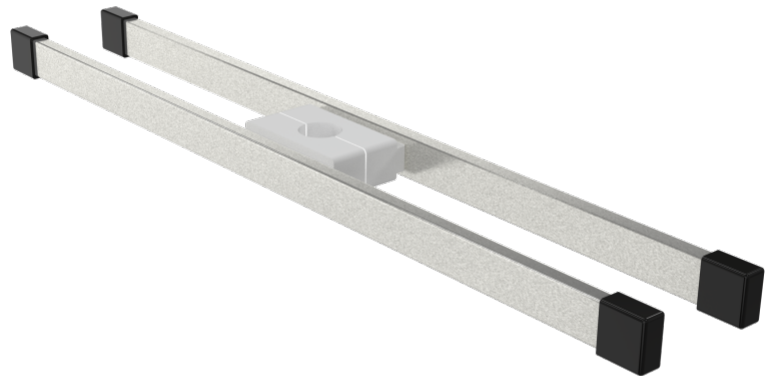


Z2N06932

PRODUCT DESCRIPTION

Material	Stainless steel/ Aluminium
Colour of plastic parts	Black
For round tube	Ø 25 mm /Ø 33,7 mm /Ø 38 mm
Total load capacity (kg)	10
Load capacity per system (kg)	5

PACKAGING UNIT: UNIT



Z2N06932

Double wall rail



Area of application

optimal hygienic characteristics (wipe disinfection)



Technology

made from high-quality stainless steel

