

medical rails, long, double-sided for roundtube Ø 33.7 mm

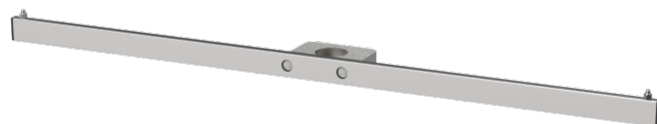
Z-Z00130

PRODUCT DESCRIPTION

Material	Stainless steel / Aluminium
For attachment to	round tube ø 33,7mm
Profile	25 mm x 10 mm
Length	705 mm
Total load capacity (kg)	11

PACKAGING UNIT: UNIT

Width Box1	0,12 m
Height Box1	0,10 m
Length Box1	0,75 m
Weight Box1	2,20 kg



Z-Z00130

medical rails, long, double-sided

