

medical rail, short

for roundtube Ø 33.7 mm

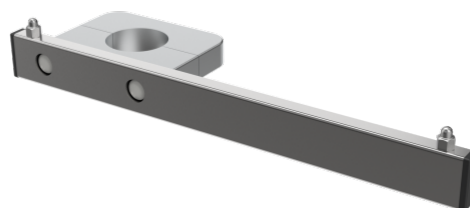
Z-Z00110

PRODUCT DESCRIPTION

Material	Stainless steel / Aluminium
For attachment to	round tube ø 33,7mm
Profile	25 mm x 10 mm
Length	250 mm
Total load capacity (kg)	3

PACKAGING UNIT: UNIT

Width Box1	0,12 m
Height Box1	0,08 m
Length Box1	0,30 m
Weight Box1	1,10 kg



Z-Z00110

medical rail, short

