

# medical rail, long

## for roundtube Ø 33.7 mm

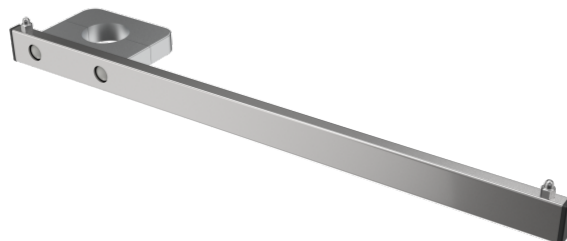
**Z-Z00100**

### PRODUCT DESCRIPTION

<b>Material</b>	Stainless steel / Aluminium
<b>For attachment to</b>	round tube ø 33,7mm
<b>Profile</b>	25 mm x 10 mm
<b>Length</b>	400 mm
<b>Total load capacity (kg)</b>	5.5

### PACKAGING UNIT: UNIT

Width Box1	0,12 m
Height Box1	0,08 m
Length Box1	0,45 m
Weight Box1	0,50 kg



**Z-Z00100**

## medical rail, long

