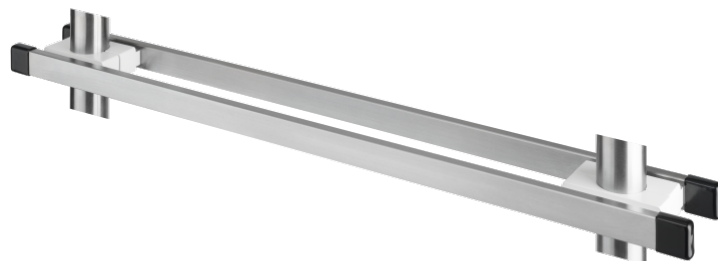


Medical rail double-sided 680 mm with 2 sets of clamps for round tube Ø 38 mm

Z-DOCK35

PRODUCT DESCRIPTION

| | |
|-----------------|----------------------------|
| Material | Stainless steel/ Aluminium |
| Colour of clamp | White |
| End Caps | plastic, black |
| Size | 25 mm x 10 mm x 680 mm |



DIN EN 60601



Best hygienic properties
smooth surface, small gaps and joints



Z-DOCK35

Medical rail double-sided 680 mm

