

Urology Lifter (short version) with electrical height adjustment

I-U02238

PRODUCT DESCRIPTION

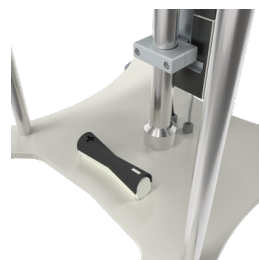
Field of application	Urology
Material	Stainless steel
Safety class	II
Bottle Holder	Stainless steel, for screw-in
Number of hooks	3
Arrangement of the hooks	120° to each other
Type of height adjustment	Electrical by foot switch
Maximum length/height	2.160 mm
Minimum length/height	1.275 mm
Operation time	appr. 19
Inner tube diameter	Ø 25 mm
Center tube (Ø in mm)	38 (Ø in mm)
Base diameter	550 x 550 mm
Castors	Stainless steel apparatus castors
Castor diameter	Ø 75 mm
Number of castors	4 with brakes and elect. conductivity
Wall charger included	Yes
Total load capacity (kg)	30
Load capacity per system (kg)	30
Load capacity per hook (kg)	10



PACKAGING UNIT: UNIT

Width Box1	0,6 m
Height Box1	1,48 m
Length Box1	0,8 m
Weight Box1	45 kg





Area of application

Convenient height adjustment using a foot switch on the footplate

Generous cut-out allows for easy operation of the footswitch

Long battery life allows use in different places

Easy to move thanks to the extended push handle with large grip surface

Enables back-friendly setting down of rinsing solutions



Technology

All plastic parts are lightfast

Stable base plate made of galvanized steel (layer thickness 10 µm)

Stainless steel tubes according to DIN EN 10217-7

Material ultrasonic and eddy current tested (according to EN 10246-9/3)

The integrated pull-out limiter prevents the adjustable tubes from separating

The height is adjusted using a battery-operated electric motor with self-locking spindle

Foot switch system according to EN 60601-1



Safety

Low risk of pinching when retracting and extending the IV-pole thanks to the built-in safety distance

High security through turn safety pole construction

No lowering in case of power failure

No risk of tripping

The motor is protected by a safety housing