

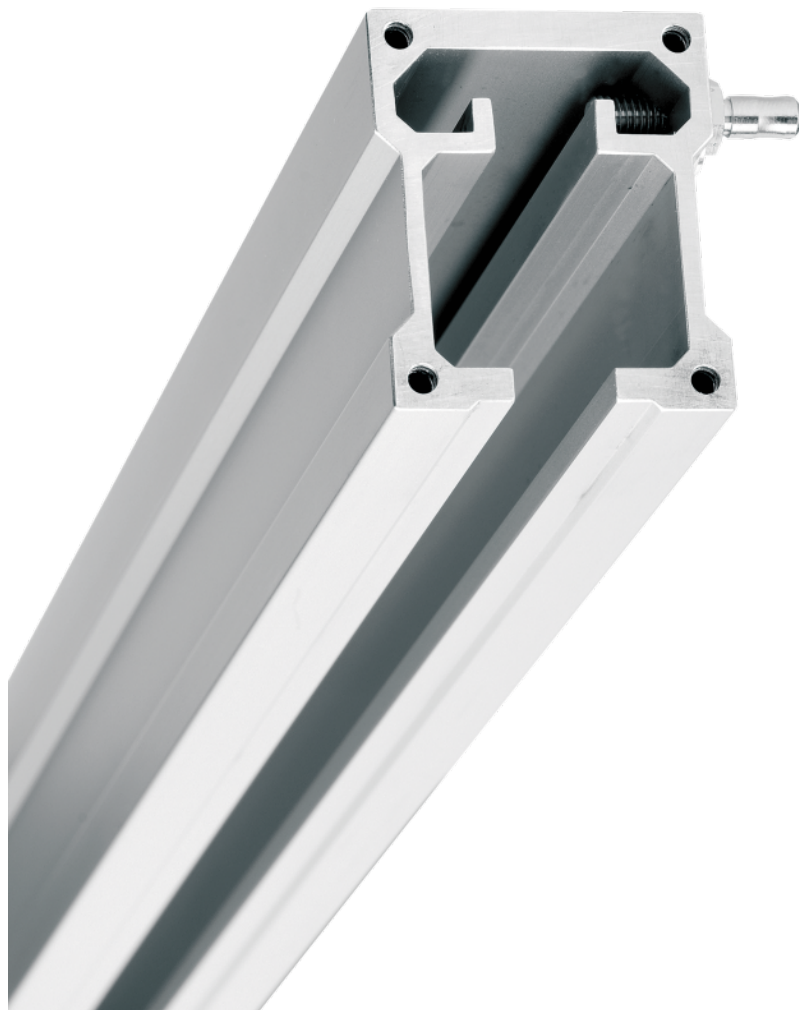
Ceiling Rail Straight 1000 mm ICS 2

standard length 1.000 mm

D1AA001W

PRODUCT DESCRIPTION

Material	aluminium, anodized
Bottle Holder	Stainless steel
Load capacity (kg)	80 kg / 1.000 mm
Maximum length/height	1.320 mm
Total load capacity	max. 80
Length	Any through the use of connectors (max. 4,000 in one piece)
Profile size	57,5 mm x 47,5 mm x 5 mm
Standard length	1.000 mm
Inner tube diameter	Ø 15 mm
Outer tube diameter	Ø 20 mm
Total load capacity (kg)	80



Straight and U-shaped ceiling rails
for heavy loads



Load capacity per meter: 50 kg



D1AA001W

Ceiling Rail Straight 1000 mm ICS 2

