

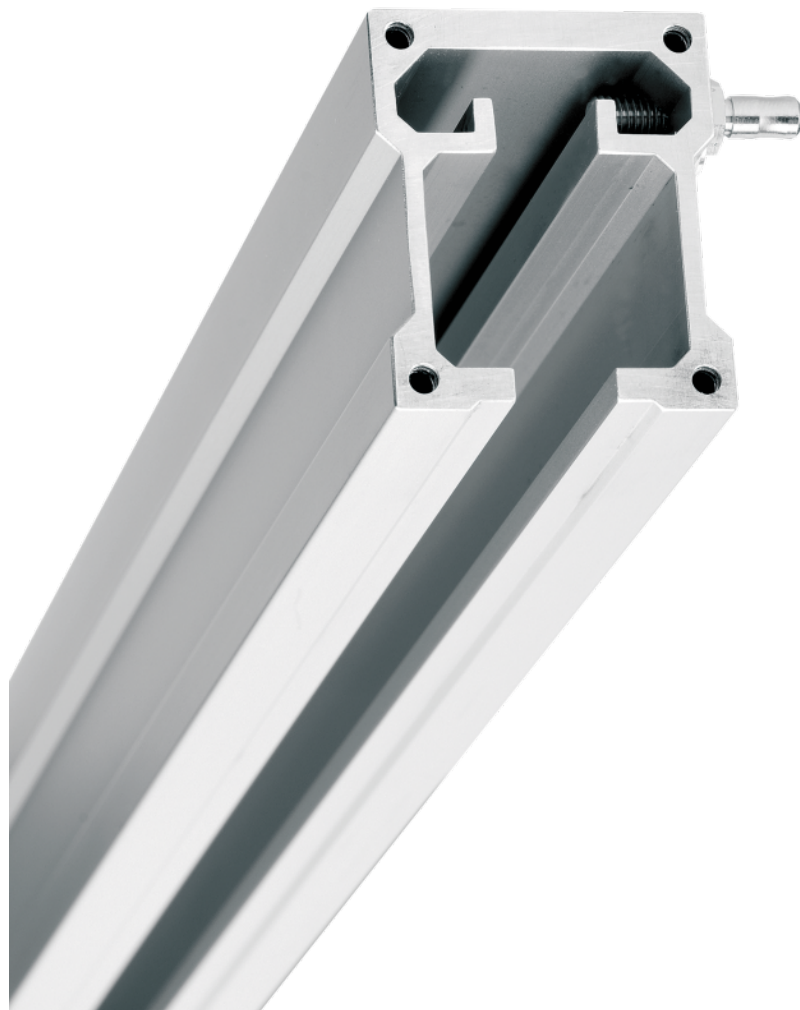
ICS 2 Ceiling Rail straight 1.000 mm

Material: aluminium, white coated

D1AA001A

PRODUCT DESCRIPTION

Material	Aluminium, coated
Color	White
Load capacity (kg)	80 kg / 1.000 mm
Total load capacity	max. 80
Standard length	1.000 mm
Total load capacity (kg)	80



**Straight and U-shaped ceiling rails
for heavy loads**



Load capacity per meter: 50 kg



D1AA001A

ICS 2 Ceiling Rail straight 1.000 mm

