

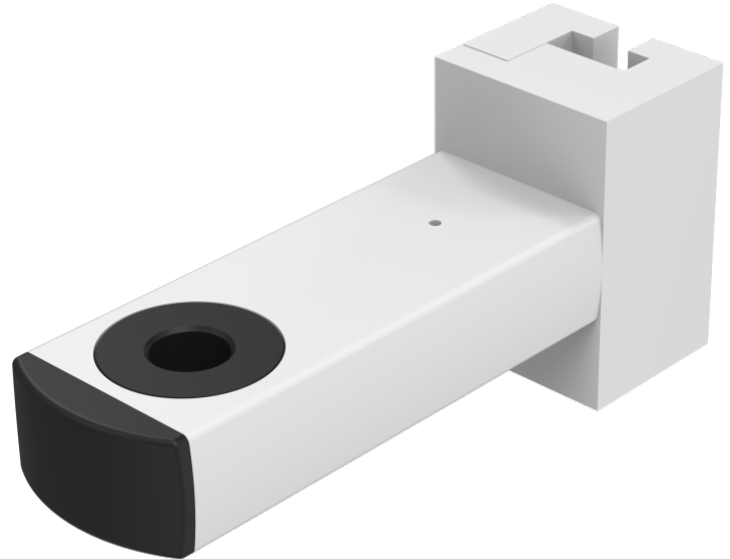
Holding claw for vertical standart rail for round tube holder Ø 18 mm

Z2N6655A

PRODUKTbeschreibung

Material	Aluminium
Color	White, RAL 9016
For attachment to	Medical rail
Inclusion for	Round tube Ø 18
Distance between medical rail and round tube	135 mm

VERPACKUNGSEINHEIT: UNIT



Z2N6655A

Holding claw for vertical standart rail

